

!

IF THESE SYMPTOMS ARE PRESENT REFER FOR FURTHER EXAMINATION



CHILDHOOD CANCER WARNING SIGNS

PRESENTING SIGNS OR SYMPTOMS	COMMON DIFFERENTIAL DIAGNOSIS (NON MALIGNANT CONDITIONS)	SUSPECTED CANCER DISEASE
Low blood counts	Infection	Leukaemia
Bleeding	Coagulation disorders, platelet disorders, bone marrow failure	Leukaemia
Lymph node swelling	Infection	Burkitt-Lymphoma (BL), Non-Hodgkin Lymphoma (NHL), Hodgkin Lymphoma
Abdominal swelling	Nutrition disorder, kidney cyst, constipation, ovarian cyst, hepatosplenomegaly, haemoglobinopathy, kidney tuberculosis	<div> <i>Wilms tumour, ovarian tumour, BL & other NHL, bladder rhabdomyosarcoma, neuroblastoma.</i> </div>
Mediastinal mass with shortness of breath	Infection	<div> Lymphoma </div>
White pupil	Congenital cataract	<div> Retinoblastoma </div>
Headache, morning vomiting, ataxia, impaired vision, paresis	Migraine, sinusitis, meningitis if associated with fever (infection)	<div> Brain tumour </div>
Bone pain, swelling of arm or leg without trauma or infection	Bone cyst, osteomyelitis	<div> Bone tumour </div>

CHILDHOOD CANCER WARNING SIGNS

1



Pallor, bruising or bleeding, general bone pain

2



Lumps or swelling – especially if painless and without fever or other signs of infection

3



Unexplained weight loss or fever, persistent cough or shortness of breath, sweating at night

4



Eye changes – white pupil, new-onset squint, visual loss, bruising or swelling around the eye(s)

5



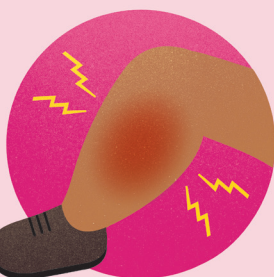
Abdominal swelling

6



Headaches, especially if unusually persistent or severe, vomiting (especially early morning or worsening over days)

7



Limb or bone pain, swelling without trauma or signs of infection



**IF THESE
SYMPTOMS ARE
PRESENT REFER
FOR FURTHER
EXAMINATION**